

# UNDERSTANDING THE ELD MANDATE

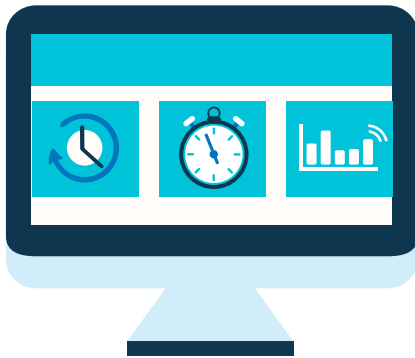


## WHAT IS THE MANDATE?

On Dec. 16, 2015, the Federal Motor Carrier Safety Administration published its final rule requiring the adoption and use of electronic logging devices (ELDs) by all drivers currently required to complete paper logs.

## WHAT IS AN ELD?

An ELD is an electronic logging device that automatically records a driver's duty status (RODS) and hours-of-service (HOS). It is designed to help fleet operators reduce paperwork and violations.



## HOW WILL THIS AFFECT MY FLEET?

As of Dec. 18, 2017, all CMV drivers who are required to keep RODS must use an ELD to document their compliance with HOS rules. As per the mandate, ELDs must:

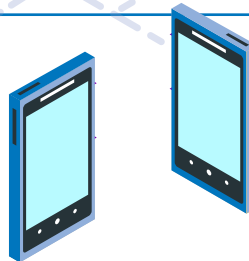
- Be "integrally synchronized" with the truck's engine
- Graphically display RODS
- Capture the driver's HOS automatically
- Transfer data during roadside inspection

## WHAT ARE THE BENEFITS OF ELDs?

- Maintain regulatory compliance
- Improve driver safety
- Enhance fleet performance

## ARE THERE ANY EXEMPTIONS?

Yes, there are limited exemptions based on truck model year, short-haul and driveaway-towaway operations, rentals of 8 days\* or fewer and duration of logbook use. Consult our Connected Fleet Team for guidance on these exemptions.



**Get connected.** At Penske, our Connected Fleet Team will work with you to understand your goals and challenges, and we will help you choose the best onboard technology solution to meet your business needs. We can also help with financing, installation, implementation and maintenance.

\*Effective April 19, 2018